

# DEVIATORI PNEUMATICI PROPORZIONALI, A 2 E A 3 POSIZIONI

**CODICE FAMIGLIA**  
FAMILY CODE

**100-001-4**

**PNEUMATIC CONTROL SWITCHES:  
PROPORTIONAL, 2 OR 3 POSITION**

**Componibili attacchi inferiori**  
Sandwich controls rear ports

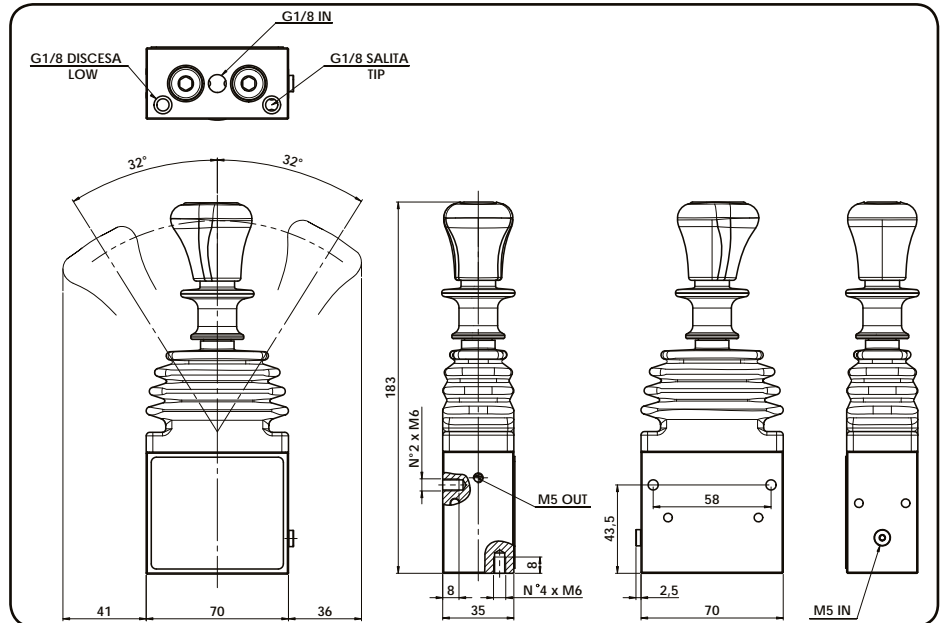
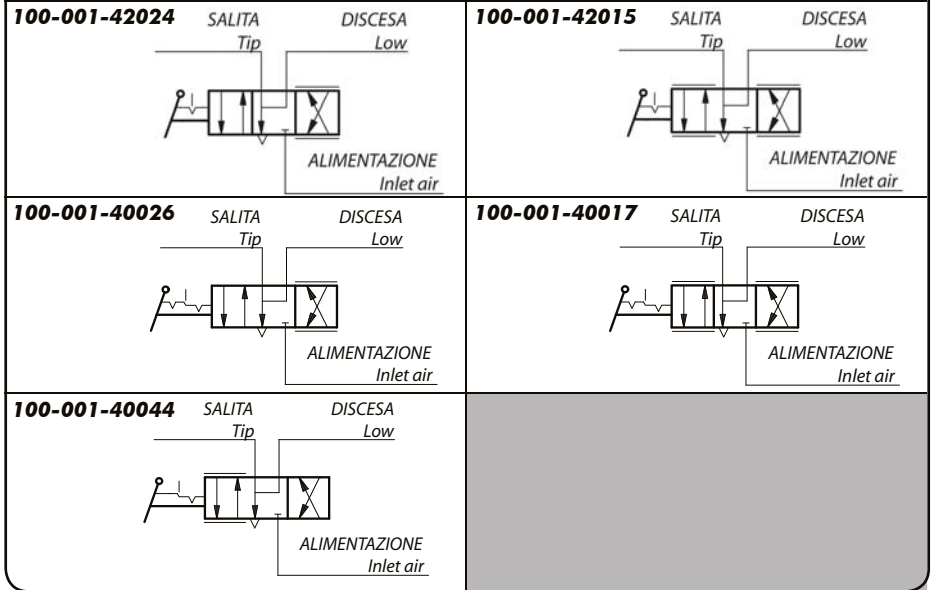
Codice fascicolo: 997-400-00075

Data: Venerdì 14 novembre 2014

Codice foglio: 997-100-00145 Rev: AE



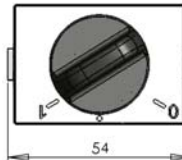
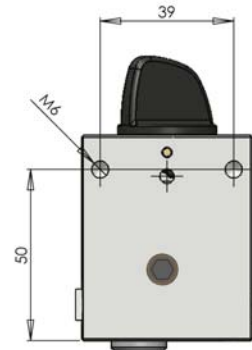
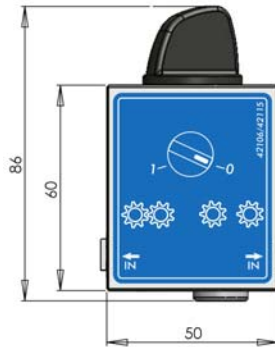
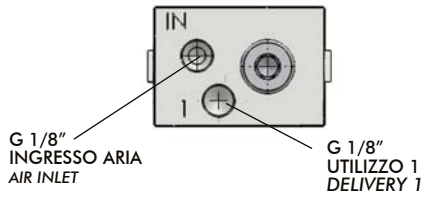
## Schema di funzionamento/Functional diagram



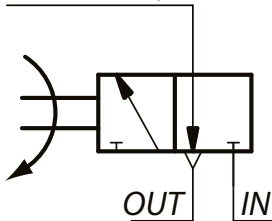
	Discesa proporzionale Proportional lowering	Salita/discesa proporzionale Proportional lowering/tipping	Pressioni Pressure values		Temperatura Temperature		
			Min.	Max.	Min.	Max.	
<b>Ritorno cloche</b> Lever return	<b>Automatico</b> Automatic "CE"	100-001-42024	100-001-42015	5 bar	12 bar	-30 °C	+80 °C
	<b>Manuale</b> Manual (con blocco salita/discesa) (with low and tip block)	100-001-40026	100-001-40017				
	<b>Manuale</b> Manual (con blocco discesa) (with low block)	100-001-40044					

**100-001-42115**

Deviatore pneumatico 3 vie 2 posizioni attacchi inferiori.  
3 way & 2 position pneumatic controls with rear ports

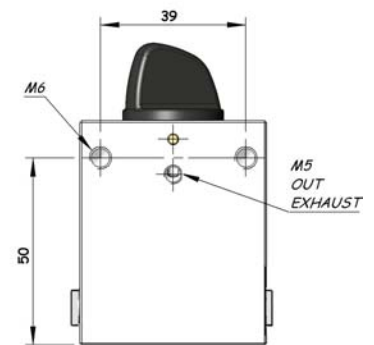
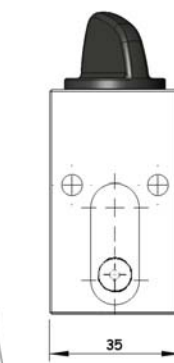
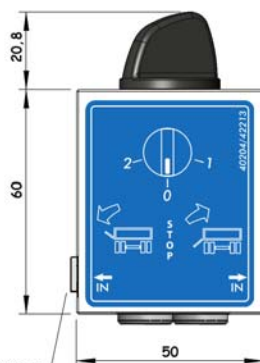
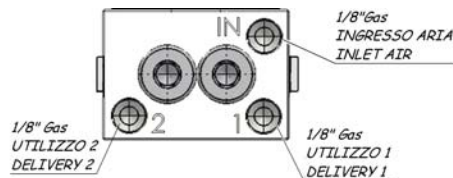
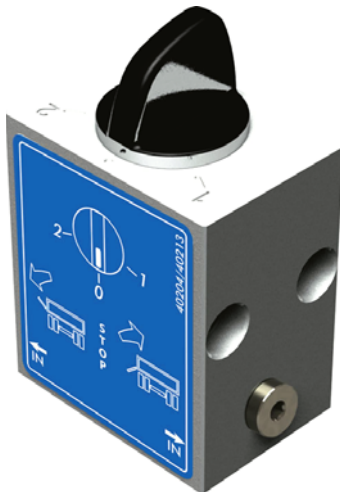


UTILIZZO 1  
Delivery 1



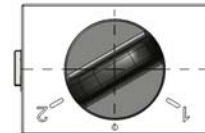
**100-001-42213**

Deviatore pneumatico 4 vie 3 posizioni attacchi inferiori.  
4 way & 3 position pneumatic controls with rear ports



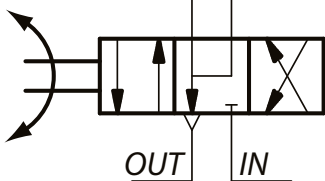
INGRESSO ARIA M5  
M5 INLET AIR

INGRESSO  
ARIA M5  
M5 INLET AIR



UTILIZZO 1  
Delivery 1

UTILIZZO 2  
Delivery 2



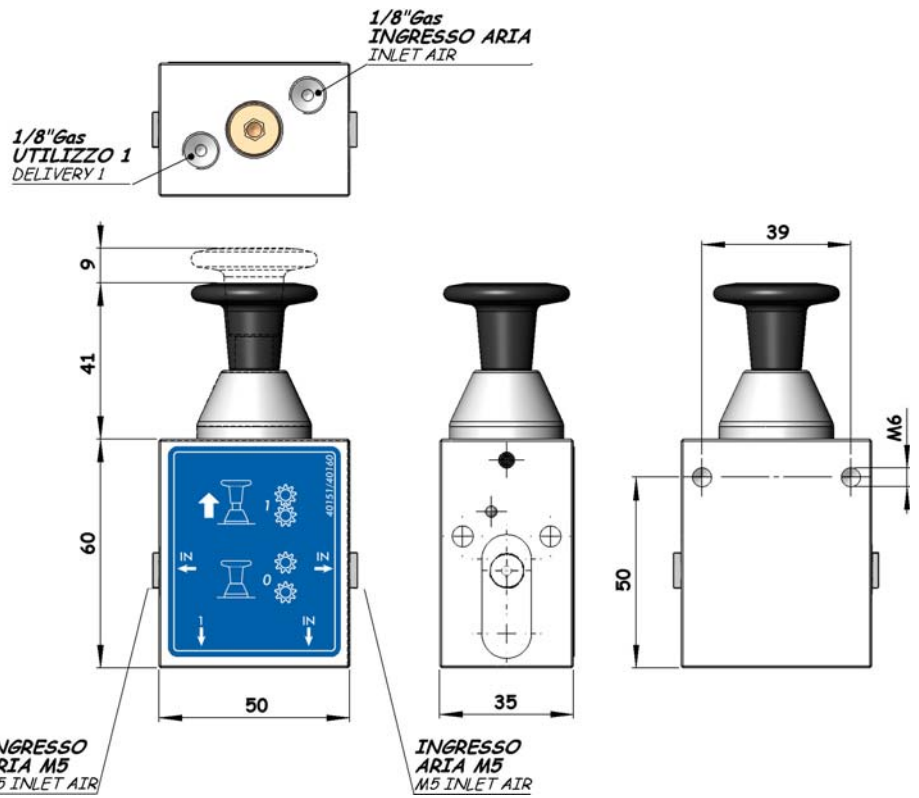
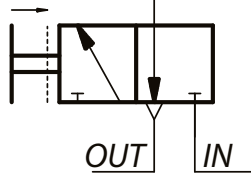
Codice fascicolo: 997-400-00075



**100-001-40160**

Deviatore pneumatico 3 vie 2 posizioni attacchi inferiori.  
3 way & 2 position pneumatic controls with rear ports

UTILIZZO 1  
Delivery 1



Data: Venerdì 14 novembre 2014

Codice foglio: 997-100-00145 Rev: AE



**100-001-40268**

Deviatore pneumatico 4 vie 3 posizioni attacchi inferiori.  
4 way & 3 position pneumatic controls with rear ports

UTILIZZO 1      UTILIZZO 2  
Delivery 1      Delivery 2

